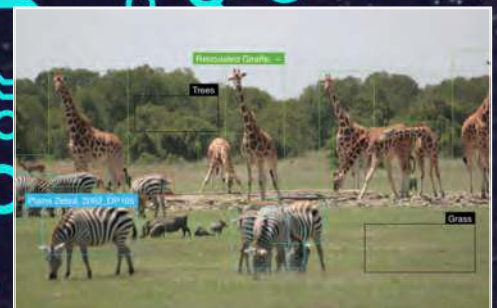


# THE WILDLIFE PROFESSIONAL



## Artificial Intelligence in the Natural World

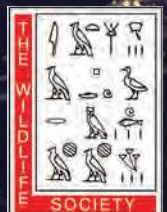
MACHINE LEARNING OFFERS NEW TOOLS TO MANAGE AND CONSERVE WILDLIFE



Transferring new technologies for wildlife management

Partners in Flight celebrates 30 years

One planet, One Health



**FEATURES**

- 28 Tools, Techniques and Teamwork**  
Transferring new technologies for wildlife management, conservation and economic development  
*By John Eisemann and Gail Keirn*
- 33 One Planet, One Health**  
The One Health concept offers a lens for managing the health of wildlife, humans and the environment by recognizing the systems they share  
*By Kaylee A. Byers, Maureen H. Murray and Chelsea G. Himsworth*
- 38 Biology by Ballot?**  
Colorado’s vote on wolf reintroduction marks a new chapter in a long story of voters weighing in on wildlife management  
*By Lindsay Martinez*
- 42 A Sound Alternative**  
Using bioacoustics to study northern spotted owls  
*By Betsy L. Howell, Damon B. Lesmeister and Scott A. Gremel*
- 46 RAWA Advances in Congress**  
TWS, AFWA and others keep pushing this groundbreaking legislation forward  
*By Sean Saville and Caroline E. Murphy*
- 48 Partners in Flight Soars On**  
Celebrating 30 years of innovative bird conservation, the partnership faces the challenges of stopping further declines  
*By Geoffrey R. Geupel and Robert P. Ford*
- 54 2020 Annual Conference: A Historic Event for all TWS Members**  
The virtual conference center is a hub of activity from the comfort of home  
*By Ed Thompson*
- 57 A Wellness Path for Wildlifers**  
In the face of conservation challenges, maintaining our well-being is crucial  
*By Michelle Doerr*

**Departments**

- 6 Editor’s Note
- 7 Leadership Letter
- 8 Science in Short
- 12 State of Wildlife
- 16 Today’s Wildlife Professional
- 61 Policy Perspectives
- 62 Field Notes
- 63 In Memory
- 64 Gotcha!

**COVER STORY >>**



**Artificial Intelligence in the Natural World**

Machine learning offers new tools to manage and conserve wildlife

*By Dana Kobilinsky*

**18**

Courtesy Wild Me



**28**

Credit: USDA APHIS-Wildlife Services



**33**

Credit: Kalyee Byers

**>> Log On for More**  
This publication is available online to TWS members on [wildlife.org](http://wildlife.org).  
References printed in blue indicate links in the online version of the magazine.