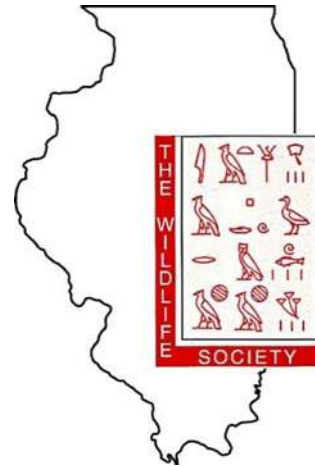


# Illinois Chapter of The Wildlife Society



*Excellence in Wildlife Conservation through Science and Education*

*Edited by Scott Beckerman, President-Elect*

## In this Issue

- President's Corner
- Conservation Affairs - Update
- New Tom Ryder Book on State Wildlife Agencies
- Midwest F&WC and More
- TWS Factsheet - Did you know?
- TWS most talked about pubs
- ICTWS Member Publications
- Upcoming Meetings
- Newsletter Article Request
- Student Chapters
- Executive Board Members

## President's Corner

This will be my last installment as your “Recycled President”, and I will keep it very brief. I have recently been helping out a very good friend who was diagnosed with cancer that required extensive surgery, a long recovery, and will soon require a long course of chemotherapy. We are both the same age, and events like this certainly bring a lot of life's concerns into focus. As wildlifers with busy careers, we often struggle to balance work, family, and all that is the ‘rest of our life’. Take time to work on that balance, and also keep the big perspectives in mind. I have had the privilege recently to write a number of articles after interviewing retired wildlife professionals, and without exception the continued importance of wildlife habitat and habitat quality came up as a primary concern. I was reminded again today that we are in the midst of [Aldo Leopold Week](#), a person who is recognized by many as the “father” of wildlife management. With spring approaching, it is a good time for some reflection as we shake off winter and plan ahead for spring!

While I do not believe it has been officially announced, the Illinois Natural History Survey has chosen a new Director, who has long been a member of the Illinois Chapter and The Wildlife Society. The history of the Survey and of the previous Directors (formerly Chiefs) speaks for itself. I believe I can speak for a lot of wildlifers in saying that we are happy to see a wildlife professional filling that important role, and I think we can be confident of the continued success and achievement of the [Survey!](#)

*Paul Brewer ICTWS President*

---



## **Conservation Affairs Committee Update**

**American Prairie Conservation Act** – In January 2018 after encouragement from our parent society, the Illinois Chapter signed-on to a letter drafted by the National Wildlife Federation in support of the American Prairie Conservation Act ([S. 1913](#), [H.R. 3939](#)). The letter, sent to the U.S. House and Senate agriculture committees, urges lawmakers to include the American Prairie Conservation Act provisions in the 2018 Farm Bill. Specifically, this legislation would expand upon the 2014 Farm Bill “Sodsaver” provision, which discourages native grasslands conversion into croplands by reducing federal assistance on crop insurance premiums for producers that convert. The American Prairie Conservation Act would increase the area managed under the Sodsaver provision to nationwide; currently the program is active in only six states. The letter was signed by 177 groups, representing a wide array of conservation, sportsmen, environmental, agriculture, landowner, and taxpayer interests, demonstrating the broad support for this provision. Included in those 177 groups are our parent society, two TWS sections, and eight TWS chapters.

For more TWS Conservation Affairs updates at the national level, please read the CAN [January 2018 newsletter](#).

*Scott Meister*  
*ICTWS Conservation Affairs Network Representative*

---

## **New from TWS and Johns Hopkins University Press**

Are you thinking about a career with a state wildlife agency or already a seasoned professional working for one? Either way, this newest book in TWS' Wildlife Conservation and Management series, "State Wildlife Management and Conservation," is a must have.

TWS Past President Tom Ryder, now retired after a long career with the Wyoming Game and Fish Department, brings together wildlife leaders from practical, policy, and academic backgrounds to tell the story of state wildlife agencies, chronicling their efforts to restore and protect our nation's natural resources.

With more than 40 contributors, the book provides a comprehensive, nationwide account of state management efforts. It will aid professors training the next generation of wildlife professionals, students hoping to enter the profession, and anyone working with wildlife to develop a more sophisticated understanding of what it means to be a state wildlife biologist.

[Order your copy now.](#)

TWS members receive a 30 percent discount off the cover price of \$75.

## **Meeting Notes from the Midwest Fish and Wildlife Conference and More**

I want to highlight the recent Midwest Fish and Wildlife Conference, the North Central Section of TWS' Annual Business meeting, and several issues relevant to TWS. The information will be especially useful to members who are only members of TWS at the state chapter level and are not a member at the North Central Section and/or International level.

**Midwest Fish and Wildlife Conference** - The conference was held January 28-31, 2018 in Milwaukee, WI and had an attendance of over 1,000. The Conference Planning Committee developed several student-focused events to provide useful information to aid in career development. Activities under the Wild Jobs Café included a jobs panel, resume writing, graduate school panel, and a session on interview skills. The Student/Professional Networking Mixer was well attended and provided a unique opportunity for students to meet, ask questions, and network with wildlife and fish professionals. The Midwest Fish and Wildlife Conference will be held in 2019 in Cleveland, OH and the 2020 conference will be hosted by IL.

### **North Central Section of TWS**

The NCS Annual Business meeting was well attended and was led by President Katy Reeder (IA DNR). The NCS election results were reported by Gary Potts, Chair of the Nominating Committee. Dr. Gary Roloff of MI State University was elected President-Elect, John Cepek, Cleveland Metro Parks was elected Secretary, and Kali Rush, University of WI Stevens Point was elected Graduate Student Representative. The Continuing Education Fund (CEF) history, fund raising and future use was discussed by Gary Potts and Ollie Torgerson (Secretary, Midwest Association of Fish and Wildlife Agencies) who have worked on the CEF since the 1990's. We urged the development of a committee to set the course for future symposia and training workshops that could be sponsored by the NCS. Dr. Pat Lederle (MI DNR and NCS Past President) discussed the 3<sup>rd</sup> annual NCS Leadership Workshop and

indicated that 28 individuals participated. The workshop was led by staff from the Association of Fish and Wildlife Agencies' National Conservation Leadership Institute (NCLI) and highlighted leadership skills and experiences by past alumni of NCLI from the Midwest. Dr. Lederle is developing the Leadership workshop for next year. If you are not a member of the NCS, please consider joining when you renew your TWS membership.

### **TWS International Level**

**Give Back Program** - The Give Back program started on December 1, 2016. Any current member who renews their membership online will immediately be prompted to nominate a deserving individual for the Give Back program. The six-month complimentary membership will introduce the person to the many benefits that TWS has to offer. Prior to renewing your membership, please have the name and email of the person that you will be nominating in order to facilitate the transaction. For more information go to <http://wildlife.org/give-back-program-extended-to-students/>.

**Publications** - A major effort by TWS Council and staff in 2016 resulted with a new addition to our list of membership benefits: online access to TWS' three journals. Now you can read all the latest papers in each issue of *The Journal of Wildlife Management*, the *Wildlife Society Bulletin*, and *Wildlife Monographs* and access the complete archives of these journals as part of your TWS membership. This initiative reinforces TWS' commitment to science-based management and conservation and many members have expressed appreciation for this initiative which will expand our outreach.

**Leadership Institute** – TWS' Leadership Institute is now accepting applications for its Class of 2018. Selected early-career professionals will receive leadership training, mentoring, and a travel grant to attend TWS' Annual Conference in Cleveland, Ohio, in October 2018. The application deadline is 18 March 2018. Developed in 2006, the LI helps to facilitate training opportunities for participants over a several month period. There are now over 150 alumni in the program with several coming from IL. Learn more about the LI at <http://wildlife.org/next-generation/leadership-institute/>.

**Student Travel Grants** - Students who want to go to the next annual conference of TWS should stay tuned at [www.wildlife.org](http://www.wildlife.org) for an upcoming announcement about travel grants for 2018. TWS initiated a student travel grant program in 2008 to assist with student travel to our annual conference. To qualify for the grant, students must have an approved poster and/or paper for the annual conference. Twenty three students were approved for travel to the annual conference in 2017.

**TWS Website** – Check out our website at [www.wildlife.org](http://www.wildlife.org) to keep updated on issues and programs via the Conservation Affairs Network, our new Policy Library which houses our position statements, technical reviews, and fact sheets, and many other categories that will be useful for members.

**TWS member value proposition** – member benefits have certainly increased over the last few years. The Wildlife Society continues to make major strides to improve our profession. I hope members of the ICTWS who are not a member of TWS at the International level will consider joining. The cost of membership is \$41.00 for students and \$81.00 for regular members. We must continue to value and

promote membership at all levels, continue mentoring students and early career professionals, expand our networking within our profession and expand our partnerships and outreach. Please be a part of something larger than yourself. All the activities of TWS are important because together “We are The Wildlife Society.”

*Gary E. Potts - ICTWS Member  
Past-President, The Wildlife Society*

## **TWS FACTSHEET - Did you know? A list of TWS Member Benefits**

### **Did you know?**

[The Wildlife Society](#) endorses professional development and career advancement at various stages through its professional certification programs. The Certified Wildlife Biologist® and Associate Wildlife Biologist® designations validate a professional’s completion of rigorous academic standards, educational background and demonstrated expertise in the art and science of applying the principles of ecology to the conservation and management of wildlife. Learn more about The Wildlife Society’s professional certification programs at [wildlife.org/certification-programs](http://wildlife.org/certification-programs).

### **Did you know?**

The new TWS Network Online Directory has revolutionized networking opportunities for all members of the Society. The directory is an incredible tool featuring a robust search engine that helps members connect with each other based on location, area of focus, employer type and other relevant factors. Its versatility can help you make valuable connections for collaboration, explore job opportunities, find mentors and more! [Click here](#) to learn more about this great TWS asset, or visit [wildlife.org](http://wildlife.org) to see the complete list of membership benefits.

### **Did you know?**

The Wildlife Society’s diverse membership represents professionals from all across the wildlife science, management and conservation community, and from every organization type, including federal, state agency, private and corporate industry, nonprofit, academia and more! The Society provides a common platform for cross-organizational employees to network, communicate, share ideas, and collaborate on policy and conservation issues. To learn more about who we are, visit [wildlife.org/about](http://wildlife.org/about).

### **Did you know?**

Between conference discounts, free magazines and journals, tuition savings through American Public University, and book discounts, TWS members can save hundreds of dollars each year, all for a price of just \$81! [Click here](#) to see a complete list of TWS membership benefits, or [join today](#).

### **Did you know?**

The Wildlife Society membership now includes free, online access to *The Journal of Wildlife Management*, *Wildlife Monographs*, and *Wildlife Society Bulletin*. Learn more about TWS' journals by [clicking here](#), or visit [wildlife.org](http://wildlife.org) to see the complete list of membership benefits.

### **Did you know?**

Tired of paying an arm and a leg for the latest wildlife science and management textbooks and manuals? In cooperation with Wiley publishing and Johns Hopkins University Press, [The Wildlife Society](#) offers select titles to our members at a significant discount of 25-30 percent off. Check out a few of the titles at the [TWS book store](#).

**Did you know?**

Members of The Wildlife Society receive an e-newsletter, the eWildlifer, each week. The newsletter contains additional wildlife science, management, conservation and policy news, fun and educational information such as Quiz Bowl questions, two TWS Talks per week from our archive of Annual Conference presentation recordings, and important TWS news and notes in the announcements section!

**Did you know?**

[The Wildlife Society's](#) Annual Conference features over 14 concurrent sessions, 900 educational opportunities, more than 40 networking opportunities, and nearly 100 sponsors and exhibitors. Attendees also get online access to recorded presentations following the conference. TWS members can get all this at a \$200-discounted registration rate. Learn more about our conference at [twconference.org](http://twconference.org).

**Did you know?**

There are 27 Working Groups active within The Wildlife Society, encompassing nearly all facets of the complex wildlife profession. Working groups are forums where TWS members with common professional interests can network, exchange information and promote science-based decision-making and management of wildlife and its habitats. [Click here](#) to see a complete list of TWS Working Groups and find out how you can join at [wildlife.org/join/](http://wildlife.org/join/).

**Did you know?**

Members of [The Wildlife Society](#) enjoy six issues of our award-winning magazine, [The Wildlife Professional](#), each year. Featuring news and analysis on wildlife science, conservation, management, policy and education, it's a favorite membership benefit. TWS staff and contributing authors profile outstanding wildlife professionals, cover contemporary issues, summarize relevant scientific papers, highlight new field techniques, and more in this bimonthly publication.

*Mariah Simmons - Units Services Coordinator*

*The Wildlife Society* [msimmons@wildlife.org](mailto:msimmons@wildlife.org)

**Read the Most Talked About Papers From JWM and WSB**

Are you taking advantage of your free access to TWS journals?

As a member of The Wildlife Society, you can now easily read the full text of every paper—including the most talked about papers—from the *Journal of Wildlife Management* and the *Wildlife Society Bulletin*. This new benefit has been extremely popular since it was launched in January 2017. And it's leading to increased visibility for papers published in TWS Journals.

The list of papers below includes those with the highest Altmetric scores, which translates to how much attention the paper is getting. The scores are composed of metrics and qualitative data that are complementary to traditional, citation-based metrics. They can include—but are not limited to—mainstream media coverage, discussions on research blogs and mentions on social networks such as Twitter. Many journals today use the Altmetric scoring system because it indicates the amount of attention a paper has received. Authors also find the scores useful to follow engagement in their publications.

To read TWS journals, you must first [log into the TWS member portal](#). Choose the “Publications” tab at the top of the page to go to the Wiley Online Library where the journals are archived.

- Altmetric score 436 [Polar bear attacks on humans: implications of a changing climate](#)
- Altmetric score 134 [The true cost of partial fencing: evaluating strategies to reduce reptile road mortality](#)
- Altmetric score 117 [How publishing in open-access journals threatens science and what we can do about it](#)
- Altmetric score 89 [Investigating impacts of oil and gas development on greater sage-grouse](#)
- Altmetric score 88 [Free-roaming cat interactions with wildlife admitted to a wildlife hospital](#)
- Altmetric score 87 [Demography of an increasing caribou herd with restricted wolf control](#)
- Altmetric score 78 [Evaluating population expansion of black bears using spatial capture-recapture](#)
- Altmetric score 73 [Online hunting forums identify achievement as prominent among multiple satisfactions](#)
- Altmetric score 68 [Population-level effects of lead fishing tackle on common loons](#)
- Altmetric score 68 [Persistence of great sage-grouse in agricultural landscapes](#)

*\*Altmetric scores based on current standings on Nov. 9, 2017*

### **Stay on Top of Newly Published Issues**

There are two ways you can make the most of your free access to TWS journals.

#### **Down load the apps**

The JWM and WSB apps are available on iTunes and Google Play.

[For more information.](#)

#### **Sign up for email table of contents alerts.**

You can sign up to receive an email each time a new issue is published.

[For more information.](#)

## Technical Problems

If you experience a problem, please contact the Wiley help desk: [onlinelibraryhelpdesk@wiley.com](mailto:onlinelibraryhelpdesk@wiley.com).

*Nancy Sasavage - TWS Director of Publications and Communications*

## **Many New ICTWS Member Publications!**

**VonBank\_etal** - 2018 (FreshwaterEcology - Ichthyochory\_in\_a\_temperate\_river\_system\_by\_common\_carp)

<http://www.tandfonline.com/doi/full/10.1080/02705060.2018.1423645>

**Loss\_et\_al** -2017- Frontiers\_in\_EcolEnv

<http://onlinelibrary.wiley.com/doi/10.1002/fee.1633/full>

**Hennig\*, J.D., Benson, T.J., J.D. Stafford, A.P. Yetter, H.M. Hagy, and K.W. Stodola.**

2017. An aerial grid-based method to estimate nonbreeding duck abundance.

Wildlife Society Bulletin. DOI:10.1002/wsb.807

<http://onlinelibrary.wiley.com/doi/10.1002/wsb.807/full>

**Osborn\*, J.M., H.M. Hagy, M.D. McClanahan\*, J.B. Davis, and M.J. Gray.** 2017.

Habitat selection and activities of dabbling ducks during non-breeding periods.

Journal of Wildlife Management 81:1482–1493. DOI: 10.1002/jwmg.21324.

<http://onlinelibrary.wiley.com/doi/10.1002/jwmg.21324/abstract>

**Dorak\*, B.E., M.P. Ward, M.W. Eichholz, B.E. Washburn, T.P. Lyons, and H.M. Hagy.**

2017. Habitat selection of Canada Geese in an urban environment during winter.

Condor 119:787–799. DOI: 10.1650/CONDOR-16-234.1

**Abstract Only\*\*** <http://www.bioone.org/doi/abs/10.1650/CONDOR-16-234.1>

**Lemke, M., H.M. Hagy, A.F. Casper, M. Lemke, and T.D. VanMiddlesworth.** 2017.

Short-term effects of initial flood disturbance on restoration projects: Echoes of a flood pulse. Hydrobiologia. DOI 10.1007/s10750-017-3220-5.

<https://link.springer.com/article/10.1007/s10750-017-3220-5>



**Yetter, A.P., H.M. Hagy, M.M. Horath, J.D. Lancaster, C.S. Hine, R.V. Smith, and J.D. Stafford.** 2017. Mallard survival and habitat use during autumn in Illinois. *Journal of Wildlife Management*. DOI: 10.1002/jwmg.21346.

<http://onlinelibrary.wiley.com/doi/10.1002/jwmg.21346/full>

**VonBank\*, J.A., A.F. Casper, A.P. Yetter, and H.M. Hagy.** 2017. Evaluating a rapid aerial survey for floating-leaved aquatic vegetation. *Wetlands* 37:753–762. DOI 10.1007/s13157-017-0910-8.

<https://link.springer.com/article/10.1007/s13157-017-0910-8>

**Osborn\*, J.M., H.M. Hagy, M.D. McClanahan\*, and M.J. Gray.** 2017. Temporally robust models for predicting seed yield of moist-soil plants. *Wildlife Society Bulletin*. 41:157–161. DOI: 10.1002/wsb.735.

<http://onlinelibrary.wiley.com/doi/10.1002/wsb.735/full>

**Hagy, H.M., J.D. Stafford, R.V. Smith, C.S. Hine, A.P. Yetter, C. Whelan, and M.M. Horath.** 2017. Opportunity costs influence food selection and giving-up density of dabbling ducks. *Journal of Avian Biology* DOI: 10.1111/jav.01275.

<http://onlinelibrary.wiley.com/doi/10.1111/jav.01275/full>

**Hagy, H.M., C.S. Hine, M.M. Horath, A.P. Yetter, R.V. Smith, and J. D. Stafford.** 2017. Waterbird response indicates floodplain wetland restoration. *Hydrobiologia* DOI: 10.1007/s10750-016-3004-3.

<https://link.springer.com/article/10.1007/s10750-016-3004-3>

**Hagy, H.M., M.M. Horath, A.P. Yetter, C.S. Hine, and R.V. Smith.** 2017. Evaluating the tradeoffs between sanctuary for migrating waterbirds and recreational opportunities in a restored wetland complex. *Hydrobiologia* DOI:10.1007/s10750-016-2711-0.

<https://link.springer.com/article/10.1007/s10750-016-2711-0>

**Hine, C.S., H.M. Hagy, M.M. Horath, A.P. Yetter, R.V. Smith, and J. D. Stafford.** 2017. Response of aquatic vegetation communities and other wetland cover types to floodplain restoration at Emiquon Preserve. *Hydrobiologia* DOI: 10.1007/s10750-016-2893-5.

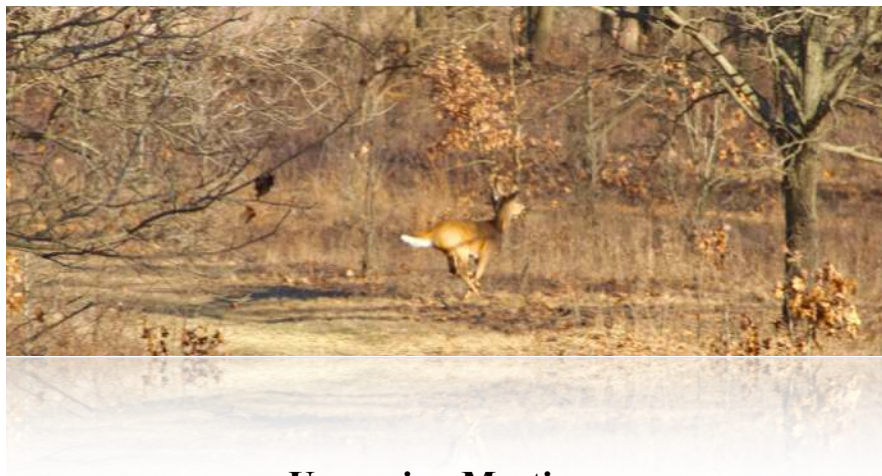
<https://link.springer.com/article/10.1007/s10750-016-2893-5>

**Sparks, R.E., K.D. Blodgett, A.F. Casper, H.M. Hagy, M.L. Lemke, A.F.M. Velho, and L.C. Rodrigues.** 2017. Why experiment with success? Opportunities and risks in applying assessment and adaptive management to the Emiquon floodplain restoration project. *Hydrobiologia* DOI: 10.1007/s10750-016-2785-8.

<https://link.springer.com/article/10.1007/s10750-016-2785-8>

**Pullins, C. K., Guerrant, T. L., Beckerman, S. F. and Washburn, B. E.** (2018), Mitigation translocation of red-tailed hawks to reduce raptor–aircraft collisions. *Jour. Wild. Mgmt.*, 82: 123–129. doi:10.1002/jwmg.21332

<http://onlinelibrary.wiley.com/doi/10.1002/jwmg.21332/full>



### Upcoming Meetings

<http://wildlife.org/illinois-chapter/meetings/>

---

**SAVE THE DATE!**

**2018 Annual Meeting  
Illinois Chapter of The Wildlife Society**



**April 22-24, 2018**

at the Hawthorn Suites by Wyndham Hotel

**Champaign, Illinois**

*More Information Including Agenda, Registration Information, and Call for Abstracts to Follow Soon!!*

---



**SAVE THE DATE**

**CLEVELAND, OHIO | OCTOBER 7-11, 2018**

This year our conference travels to **Cleveland, Ohio, to celebrate our 25 years of educational conferences**. Each year our conference grows with more educational and networking sessions, and 2018 is no exception. We anticipate our biggest conference to date, as members from across North America gather to celebrate our 25th Annual Conference.

**Interested in presenting at next year's conference?**

**Call for Proposals**

NOV 13, 2017 - MAR 21, 2018

**Call for Abstracts**

*(papers & posters)*

FEB 19 - APR 22, 2018

More information on next year's conference will launch May 2018 on [twsconference.org](http://twsconference.org). Until then, we will keep this page updated with important date

## **ICTWS Newsletters**

Don't wait for solicitation to provide any contributions to the next ICTWS Newsletter! We accept news, awards notices, recent publications, upcoming conferences, or any item that could be valuable to members throughout the entire year. MS Word and .jpg formats are preferred for inclusion in the newsletter . Please email Scott Beckerman at [sc.Beckerman@aphis.usda.gov](mailto:sc.Beckerman@aphis.usda.gov) your contributions.

## **Student Chapter Information**

### ***Contacts:***

#### **Eastern Illinois University**

Advisor: Dr. Jill Deppe, [jldeppe@eiu.edu](mailto:jldeppe@eiu.edu)

President: Ashleigh Cable, [abcable@eiu.edu](mailto:abcable@eiu.edu)

#### **Southern Illinois University**

Advisor: Dr. Eric Schauber, [schauber@siu.edu](mailto:schauber@siu.edu)

President: Becca Curtiss

Webpage: <http://wildlifezoology.rso.siu.edu/>

#### **University of Illinois at Urbana-Champaign**

Advisors: Dr. Craig Miller,

President: Tristan Schramer

Webpage: [:https://www.facebook.com/groups/165683637551/](https://www.facebook.com/groups/165683637551/)

#### **Western Illinois University**

Advisors: Dr. Chris Jacques, [CN-Jacques@wiu.edu](mailto:CN-Jacques@wiu.edu)

Webpage: <https://www.facebook.com/WIU.Wildlife.Society/>

### ***Student Resources***

The Wildlife Society staff and Council actively encourage the success of student chapters and provide ongoing assistance to them. For more information on resources available to student chapters including annual conclaves, the TWS Leadership Institute, Career Development and Job Board visit: <http://wildlife.org/next-generation/>

For information on student travel grants to attend next year's ICTWS meeting in Champaign-Urbana, contact President Paul Brewer at [fireboss@mchsi.com](mailto:fireboss@mchsi.com) .

---

## **ICTWS Executive Board**

Paul A. Brewer, President  
Retired, Illinois DNR  
[fireboss@mchsi.com](mailto:fireboss@mchsi.com)  
(217) 962-0709

Scott Beckerman, President-Elect  
USDA - APHIS - Wildlife Services  
[sc.Beckerman@aphis.usda.gov](mailto:sc.Beckerman@aphis.usda.gov)  
(217) 241-5726

Heath Hagy, Past President  
U.S. Fish & Wildlife Service  
[heath\\_hagy@fws.gov](mailto:heath_hagy@fws.gov)  
(931) 215-5505

Greg Fretueg, Secretary/Treasurer  
Illinois Department of Natural Resources  
[gregory.fretueg@illinois.gov](mailto:gregory.fretueg@illinois.gov)  
(309) 215-8195

Travis Guerrant, Councilperson-at-Large  
USDA – APHIS – Wildlife Services  
[Travis.Guerrant@aphis.usda.gov](mailto:Travis.Guerrant@aphis.usda.gov)  
(217) 241-5731

Pat McDonald, Councilperson-at-Large  
Illinois Department of Natural Resources  
[patrick.mcdonald@illinois.gov](mailto:patrick.mcdonald@illinois.gov)  
(217) 557-1189