

# The Wildlife Society Pennsylvania Chapter



Newsletter—Spring/Summer 2015

## President's Message

We are well into the field season and I hope everyone is enjoying their time outdoors. Spring and summer are so exciting in Pennsylvania and they always seem to fly by as we are all busy trying to keep track of all kinds of wildlife and their young. On April 24<sup>th</sup> I had my students out at a local lake as hundreds of migrating swallows whizzed by our heads. The students looked at me like I was nuts as I couldn't contain my happiness when I heard my first black-throated green warbler of the year. On May 14<sup>th</sup> I found my first nest on a study site of the year, again a black-throated green warbler. By June 15<sup>th</sup> the nest was empty. The fledglings had already moved on with their parents. Fledglings, fawns and other babies were everywhere. As fast as the breeding season had come it was passing.

Now into July we are in the heart of the summer. Wildlife professionals do not see each other much during this time of the year unless we are working on the same field projects. Although we are all busy, the Board of PATWS has been hard at work, most recently providing comments on the Pennsylvania Game Commission's Strategic Plan for 2015-2020. Individually, I have been accepted into the Leadership Institute of The Wildlife Society and will be learning more about the organization and how to be an effective leader over the next few months. My hope is that my new knowledge and experiences will allow me to have a positive effect on our own Pennsylvania Chapter now and into the future.

Going back a few months, the PATWS held our annual conference in March at the Ramada in State College. As always, it was wonderful to see many of the wildlife professionals from throughout the Commonwealth. The high number of students in attendance was refreshing. Luckily, I was able to attend the necropsy workshop on Friday and am certain it was the best workshop I have ever attended. Thanks to all of you who attended and

those who responded to our post-conference survey. Your responses are very valuable as we plan the conference for 2016.

As a member of the Pennsylvania Chapter of The Wildlife Society, you should always feel free to share any ideas, comments, recommendations, etc. with the Board. We are always looking for new ideas for workshops and conference content. Our contact information is available on our website and all comments are welcome and appreciated.

Over the next few months we will start planning the 2016 conference and I will be working through the Leadership Institute. I look forward to sharing about my experience in the next newsletter. In the meantime, enjoy the beautiful summer Pennsylvania has to offer as it will probably be snowing the next time I write a President's message.

*Emily H. Thomas*  
*President, PA TWS*

## What's Inside

Executive Board News	2
Membership Report	3
National Conference Reminder	3
Treasury Report	4
Website Update	5
Annual Conference Summary	6
Student Awards	7
Conference Survey Results	9

## Executive Board Elections

The 2015 Board member election closed in March. Emily Thomas, former Vice President, has stepped into Christina Voorhees' position as the President. Christina will now serve as the Past President. Margaret Brittingham is now Vice President (and President-elect).

### **Newly-seated Board members:**

Member At-Large— Robert W. Blye  
Member At-Large— Thomas Keller  
Secretary— Samara Trusso  
Treasurer— Virginia Tilden  
Website Manager— Jennifer Dzimielia Martin  
Newsletter Editor— Lillie Langlois

### **Mid-term Board members:**

Member At-Large— Samantha Pedder  
Member At-Large— Andrea Evans  
Northeast Section Rep.— Emily Boyd  
Membership Coordinator— Wendy Vreeland

Special thanks are in order for all those PA Chapter members who were willing to throw their hat in the ring. Congratulations to the new Board members.

More information on Board member terms, responsibilities, contact info, and PA TWS By-laws at our website: <http://www.wildlife.org/pennsylvania-chapter/>

## Annual Conference Executive Board Meeting

### **\*\*Current Board Initiatives\*\***

Comments on PGC's Strategic Plan 2015-2020: PA TWS recently submitted comments on the Pennsylvania Game Commission strategic plan for their strategic plan that will guide the agency and its operations for the next five years. Our board members collectively collated comments to provide input to this plan. The PA TWS letter to the PGC can be found on our website in the Policy section under Official Letters & Correspondence.

NE Section Automatic Enrollment: The PA TWS board recently voted to approve automatically enrolling its members in the NE section. Once this arrangement is finalized a person who signs up for PA TWS will automatically become a NE section member at no

extra cost to them. This process is still pending and waiting on the NE section to finalize the deal. Stay tuned for when this process is complete.

### Increased Participation & Communication:

PA TWS is working hard to promote member relations and increase student/professional interactions. A National recruiting campaign led to approximately 10 new PA TWS members. Last year the board activated a Facebook page and is also working on updating a list of professionals at colleges and universities and is encouraging the creation of new student chapters. Be sure to like us on Facebook!

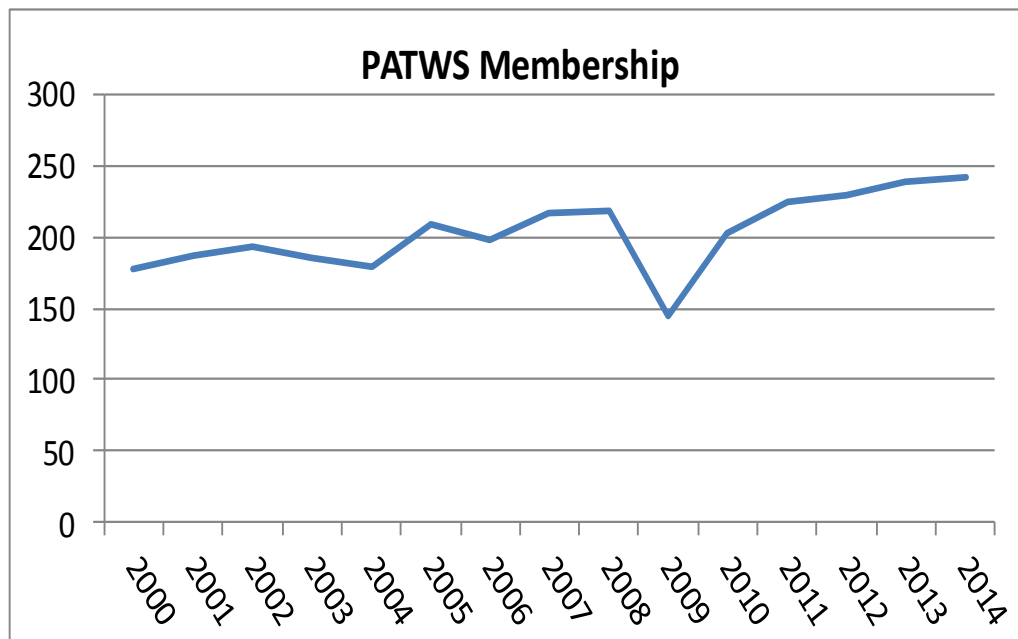
**Board Reports continued...**

**Membership Report -- 3/21/2015**

We have 64 life members.  
167 paid through 2015.

60 members still needing to renew/ be confirmed through National

2015 members (including life members) 231  
50 current members are known student members  
(graduate & undergraduate)



*Wendy Vreeland*  
Membership Coordinator, PA TWS

## Save the Date

**Applied Spatial Ecology  
in R 2-day workshop**

*September 2015*

Penn State University  
Contact: David Walter for  
details  
wdwalter@psu.edu



**The Wildlife Society  
22nd Annual Conference**

*October 17-21, 2015*

RBC Convention Centre  
Winnipeg, Manitoba

[www.twsconference.org](http://www.twsconference.org)

## Treasury Report

We currently have a balance of \$13,788.68<sup>1</sup> in our operating fund and \$15,637.04 in our Vanguard portfolio. Our assets currently total \$29,375.72<sup>1</sup>

Balances as of August 12, 2015:

Fund	Account	Annual Interest	Balance
Operating	Checking <sup>1</sup>	0.0%	13,738.68
Prime Money Mkt		4.65% - 4.75%	3,157.44
Scholarship	STAR and Wellesley Funds	Variable	12,479.60
Total:			29,375.72

### Income since 3/21/2015

Conference<sup>2</sup> and Membership dues 1,971.00

**\$1,971.00**

### Expenses\* since 3/21/2015

Ramada conference costs	8,445.49
Other conference costs <sup>3</sup>	732.00
Travel Expenses <sup>4</sup>	128.75
Donations <sup>1</sup>	700.00
Awards <sup>5</sup>	1,450.00

**\$11,456.24**

<sup>1</sup> Donations: \$200 to the Wildlife Leadership Academy, \$500 to the 2015 TWS National Conference (Both of these checks have not been cashed and therefore not deducted from the checking account balance above.)

<sup>2</sup> Includes registration fees and income from the raffle and silent auction

<sup>3</sup> Services facilitated by PSU extension office- printing programs and name tags, rental vehicles for the workshop

<sup>4</sup> Remaining travel expenses for plenary speaker, Byran Richards

<sup>5</sup> Awards: \$500 Felbaum Award, \$950 NE Field Course Scholarship (\$50 check from scholarship yet to be cashed, not deducted above.)

*Virginia Tilden*  
Treasurer, PA TWS

## Pennsylvania Chapter Website Update

The PA TWS website has transitioned to a new content management system. Our state Chapter website has a new look and is more integrated with the National Organization's website. You still have all the links you were familiar with before plus additional content. We hope you like the change!

Check it out: <http://www.wildlife.org/pennsylvania-chapter/>

*Jennifer Dzimiela Martin  
Website Manager, PA TWS*



This Newsletter is produced on a roughly quarterly basis for members of the Pennsylvania Chapter of The Wildlife Society.

**Editor: Lillie A. Langlois**

Send items of interest, comments, announcements, questions, or corrections to Lillie at: [lal276@psu.edu](mailto:lal276@psu.edu).

Subject — "PATWS newsletter"



## 2015 Annual Conference & Workshop

The Pennsylvania Chapter of The Wildlife Society held its 2015 annual meeting March 20-21 at the Ramada Inn in State College, PA. The theme for this year was **“Wildlife Diseases: Examining Impacts for Pennsylvania and Beyond”**. Overall attendance for the conference was 156 people (82 professionals, 66 students, and 8 Wildlife Leadership Academy students).

The wildlife workshop was held on Friday March 20th covering “Deer Necropsy”. Friday morning participants traveled to the State Game Land 176 where the group heard speakers from the Pennsylvania Game Commission including veterinarian Dr. Justin Brown, Ph.D., DVM. After lunch participants gained hands-on practical experience with the opportunity to necropsy a white-tailed deer.

Friday evening all attendees of the conference were invited to the student-professional mixer, which was well attended and a success as usual.

Saturday’s plenary session was centered around our theme and coupled with thoughts on our future horizons. Plenary speakers from Clarion University, USDA/APHIS/Wildlife Services, USGS/National Wildlife Health Center and PGC shared information and current updates on various wildlife disease occurring across the state.

Two concurrent sessions were held in the afternoon focusing on a variety of topics. Sixteen student and professional speakers gave presentations on topics ranging from disease transmission to wildlife dispersal patterns. Also, this year we were pleased to have eight students from the Wildlife Leadership

Academy present posters. The afternoon was capped off with the Executive Board business meeting, which was open to all members and well-attended.

PA TWS welcomed Val Beasley, Penn State Department of Veterinary & Biomedical Sciences, as our banquet speaker. Dr. Beasley spoke about the interconnectedness of human, animal, and plant life. He encouraged wildlife managers to seek broader support and financial investment to help recover and create disease-resilient landscapes. He also emphasized the need for a multi-disciplinarian approach to create a constructive dialog focusing on adaptive management to efficiently improve our collective One Health. His talk was entitled “One Health & Wildlife Management: Shared Mission, Shared Needs, Shared Opportunities”.

*Val Beasley, banquet speaker, spoke to the conference on One Health & Wildlife Management: Shared Mission, Shared Needs, Shared Opportunities.*



Thank you all for attending, contributing, and presenting, your involvement makes our annual conference what it is—a true success.

**Annual Conference continued...**

## Raffle and Auction Donations

The following individuals, businesses, and organizations donated items for the fundraising raffle this year. Please consider patronizing these businesses and thank those individuals and organizations for their commitment to improving the profession of wildlife management in Pennsylvania. Thanks again to all the donors.

**Burriss Optics**  
**Pennsylvania Game Commission**  
**Pennsylvania Wild Resources Conservation Fund**  
**Ron Beach Studios**  
**PA TWS Chapter Members**

## Student Award/Scholarship Recipients

**Nichole Leigey** received the Frank Felbaum Scholarship Award. Nicky is a student at Penn State Du Bois. Congratulations and good luck Nicky!



*Felbaum Scholarship Award  
Winner: Nichole Leigey (right) award given by  
President Emily Thomas (left)*

The Best Student Presentation Award was earned by **William Miller**, a graduate student at Penn State University. Will presented two talks at the conference and earned the award for his talk entitled “*The importance of connectivity for dispersal among salamander populations.*”



*Best Student Presentation Award  
Winner: William Miller (right)*

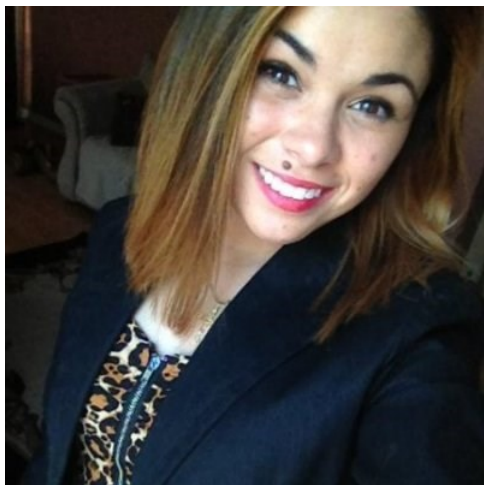
**Student Awards continued...**

**Chelsea Buell**, a student at Clarion University, was the winner of the Best Student Poster. Her winning poster was entitled “*Biomass and nutrient standing stocks associated with populations of Eastern Red-backed salamander (Plethadon cinereus) on State Game Lands 69, Crawford County, Pennsylvania*”.



*Best Student Poster Winner: Chelsea Buell (right)*

**Briana Jimenez**, a student from Delaware Valley College is the recipient of the NE field course scholarship.



*NE Field Course Scholarship Winner: Briana Jimenez*

**Hanna Krause** is from Berks County and attends Conrad Weiser High School. Hanna will be a junior this year in the Agricultural Science program and is a member of the National FFA Organization. She is the Wildlife Leadership Academy Poster Award winner this year, with her poster entitled “*Preserving the Monarch Butterflies*”.



*WLA Student Poster Winner: Hanna Krause (center)*

The WLA is a youth program administered by the Pennsylvania Institute for Conservation Education.

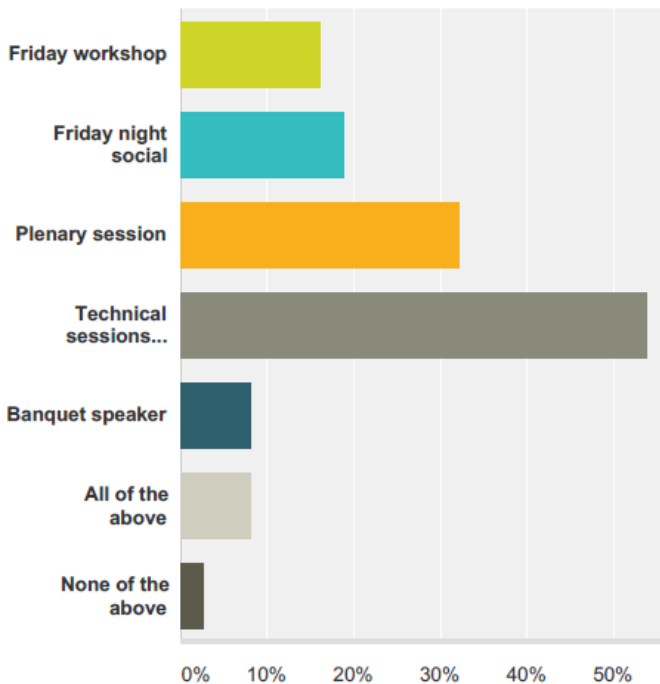




## Conference Survey Results

Thanks to the forty respondents who completed this year's conference survey. Overall, the conference was rated favorably, with 53% rating it as excellent and 39% rating it as good. Similar to previous years, the survey indicated that while networking with colleagues remains the most important overall benefit expected from the conference, participants were also interested in keeping up with current wildlife issues, continuing education and the opportunity to present their work.

We asked how participants would rate the social networking value—60% rated it as excellent and 35% rated it good. For participants who wrote down what their favorite part of the conference was, the highest number mentioned the technical sessions (see Figure 1; poster and paper presentation; n = 20), the plenary session (n = 12), and the Friday night social (n = 7).



**Fig. 1. What was the best part about the conference?**

Once again most people said they would be attending a future conference. Topics suggestions for future workshops included: deer and habitat management, new technology in the wildlife field, communication and career development skills.

Topics suggested for the plenary session in future years were diverse and included: habitat management, politics and conservation, threatened and endangered species, wildlife management and wildlife/human conflicts.

At the March business meeting a few members brought up the idea of changing the days of the conference. So, we sent out a survey to assess member preferences for future conferences. In previous years, PA TWS has held the conference on Friday and Saturday. The option suggested at the business meeting was to move to a Thursday-Friday format. Eighty-two members responded and the results were split nearly in half: 51% preferred to have a Friday-Saturday conference and 49% preferred Thursday-Friday. The PA TWS board members reviewed the results and optional comments, and decided to keep the 2016 conference on a Friday-Saturday schedule. We did this in large measure to ensure the continued participation by students, including those from WLA, as those were the most comments we received. We thank the members for responding to this inquiry and will revisit this issue in the future if the need arises.

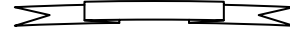
*Samara Trusso*  
*Secretary, PA TWS*

**Pennsylvania TWS Objectives**

1. To develop and promote sound stewardship of wildlife resources and of the environments upon which wildlife and humans depend.
2. To undertake an active role in preventing human-induced environmental degradation.
3. To increase awareness and appreciation of wildlife values.
4. To seek the highest standards in all activities of the wildlife profession.
5. To serve the specialized needs of Pennsylvania in wildlife resource management.

**—Who’s Who on the Board—**

2015 Executive Board Members  
Pennsylvania Chapter of The Wildlife Society



*President*.....Emily Thomas  
*Vice-President*.....Margaret Brittingham  
*Past President*.....Christina Voorhees  
*Secretary*.....Samara Trusso  
*Treasurer*.....Virginia Tilden  
*Northeast Section Representative*.....Emily Boyd  
*Website Manager*.....Jennifer Dzimielia Martin  
*Newsletter Editor*.....Lillie Langlois  
*Membership Coordinator*.....Wendy Vreeland  
*At-Large Members*.... Robert W. Blye  
Andrea Evans  
Thomas Keller  
Samantha Pedder



**22nd Annual Conference,  
October 17-21, 2015,  
Winnipeg, Manitoba**



# THE WILDLIFE SOCIETY PENNSYLVANIA CHAPTER

## 2016 Membership Application

### Pennsylvania Chapter

Check One:  Renewal

New Member

Student Member

Lifetime Member

Dues Paid through National Headquarters

Annual Dues: \$10.00

Student Dues: \$6.00

Life Membership: \$200.00

The following information is

new, updated, or corrected

unchanged

Name:

Dr.

Mrs.

Miss

Mr.

Ms.

\_\_\_\_\_

Address:

\_\_\_\_\_

\_\_\_\_\_

\_\_\_\_\_

Telephone:

Home: ( ) \_\_\_\_ - \_\_\_\_

Office: ( ) \_\_\_\_ - \_\_\_\_ Ext. \_\_\_\_

Fax: ( ) \_\_\_\_ - \_\_\_\_

E-mail: \_\_\_\_\_

Please make checks payable to:

**PA-TWS**

(Pennsylvania Chapter of The Wildlife Society)

Mail to: Virginia Tilden, Treasurer  
7755 Wertzville Road  
Carlisle, PA 17013